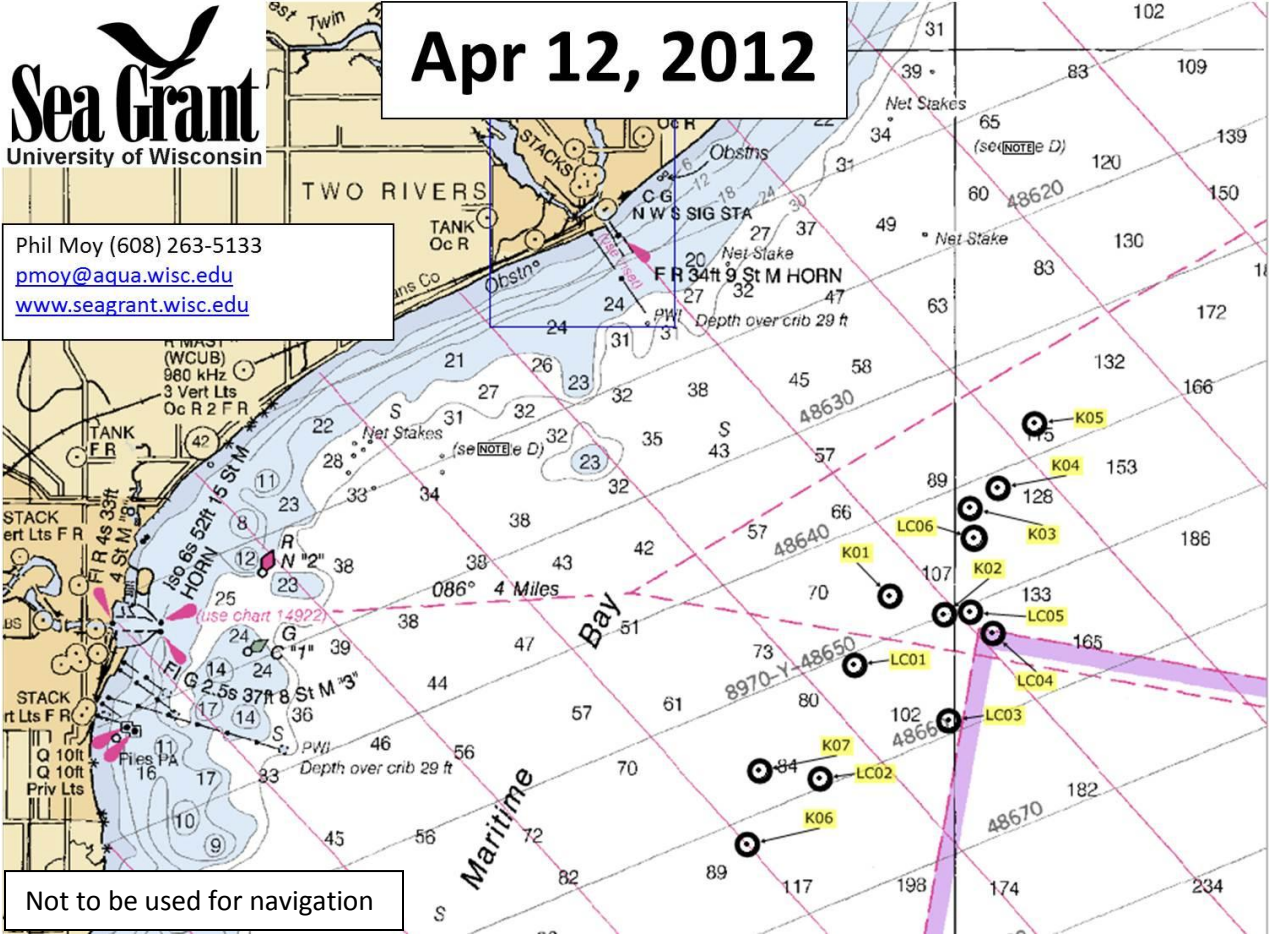




Apr 12, 2012

Phil Moy (608) 263-5133
pmoy@aqu.wisc.edu
www.seagrant.wisc.edu



LeClair Nets

LC01	44 05.210 N 87 31.082 W	LC02	44 04.326 N 87 31 456 W	LC03	44 04.778 N 87 30.066 W
LC04	44 05.458 N 87 29.587 W	LC05	44 05.624 N 87 29.830 W	LC06	44 06.199 N 87 29.791 W

Kulpa Nets

K01	44 05.748 N 87 30.700 W	K02	44 05.604 N 87 30..112 W	K03	44 06.429 N 87 29.836 W
K04	44 06.587 N 87 29532 W	K05	44 07.088 N 87 29.138 W	K06	44 03.815 N 87 32.244 W
K07	44 04.387 N 87 32.108 W				